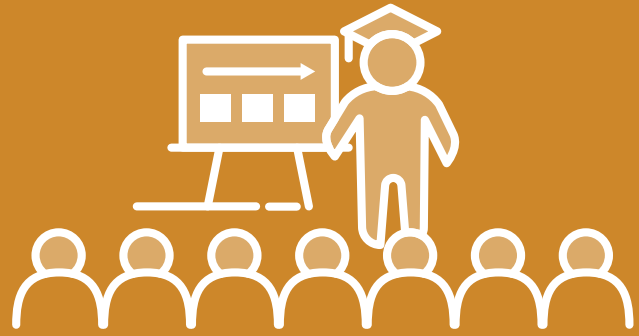


# EDvance Teaching Intensives



**22-25 January 2024**

Supported by the Fogarty Foundation



There is a significant body of evidence that high-impact instruction supports improved academic outcomes for students from all backgrounds.

This program will provide teachers with both a deep understanding of these evidence-based teaching strategies, as well as opportunities to practice and receive feedback from expert teachers. Participants will practice teaching students who are regularly exposed to high-impact instruction.

## What is it:

A 'summer school' intensive to develop and practice high-impact instruction, working with either Early Years, Middle Primary or Secondary students.

## Objectives:

- Provide a greater understanding of the research and evidence base behind high-impact instruction.
- Develop teachers' skills to implement explicit instruction teaching strategies.
- Provide first-hand experiences and receive personalised feedback on their practice in high-impact instruction.

## Program Leads:

<b>Early Years</b>	Brooke Wardana
<b>Middle Years</b>	Dr Lorraine Hammond
<b>Secondary</b>	Dr Lorraine Hammond

## Location:

<b>Day 1</b>	Edith Cowan University, Mt Lawley
<b>Day 2-4</b>	Dawson Park Primary School, Forrestfield

The Program Leads and assisting expert teachers will provide lesson demonstrations, coaching, teaching resources and individualised support throughout the week.



# Program overview

## Primary

An accelerated short term program in high-impact instructional strategies, targeting core skills for students in Years 1-2 (Early Years - literacy focus) and Years 3-4 (Middle Primary - literacy and numeracy focus)

## Secondary

An accelerated short term program in high-impact instruction strategies, demonstrated through MESH subjects, targeted at students in Years 7-9

### DAY 1

8.30am – 3.30pm

#### Introduction to Explicit Instruction

Dr Lorraine Hammond

Review of the theory and evidence-base for high-impact instruction

### DAY 2 - 4

8.30am – 3.30pm

#### Early Years and Middle Primary

8.30 – 10.30

- Lesson Demonstrations by expert teachers

11.00 – 1.30

- Lesson practice with school students in small groups
- Coaching

#### Secondary

8.30 – 10.30

- Lesson Demonstrations (English/HASS and Maths/Science)

11.00 – 1.30

- Lesson practice with school students in specific subject areas
- Coaching

2.00pm – 3.30pm:

- Concurrent Professional Learning sessions\*

*\*More information, including session content and details of how to nominate for Professional Learning sessions will be forwarded after registration*

## Location:

**Day 1:** Edith Cowan University,  
Mt Lawley Campus (Lecture Theatre TBC)

**Day 2-4:** Dawson Park Primary School,  
120 Bougainvillea Ave, Forrestfield WA 6058

There are limited places available for each Intensive:

Early Years **30 participants**

Middle Primary (double stream) **50 participants**

Secondary **40 participants**

- **Primary Schools** can send up to **4 teachers per school**, with a maximum of 2 Early Years teachers.
- **Secondary Schools** can send up to **4 teachers per school**, with a maximum of 2 teachers per Learning Area.

Additional places may be available – please contact us to discuss and be placed on the waitlist.

## School leaders – next steps:

- Discuss the opportunity with your leadership team and staff and decide which teachers you would like to nominate
- Ensure teacher availability for dates: **22 January – 25 January 2024**

**Forward your expression of interest** (including the Intensive program you are nominating for and the number of teachers) to: Daniella Hassett: [daniella.hassett@fogartyedvance.au](mailto:daniella.hassett@fogartyedvance.au)

**Closing date for EOIs 6 November, 2023**